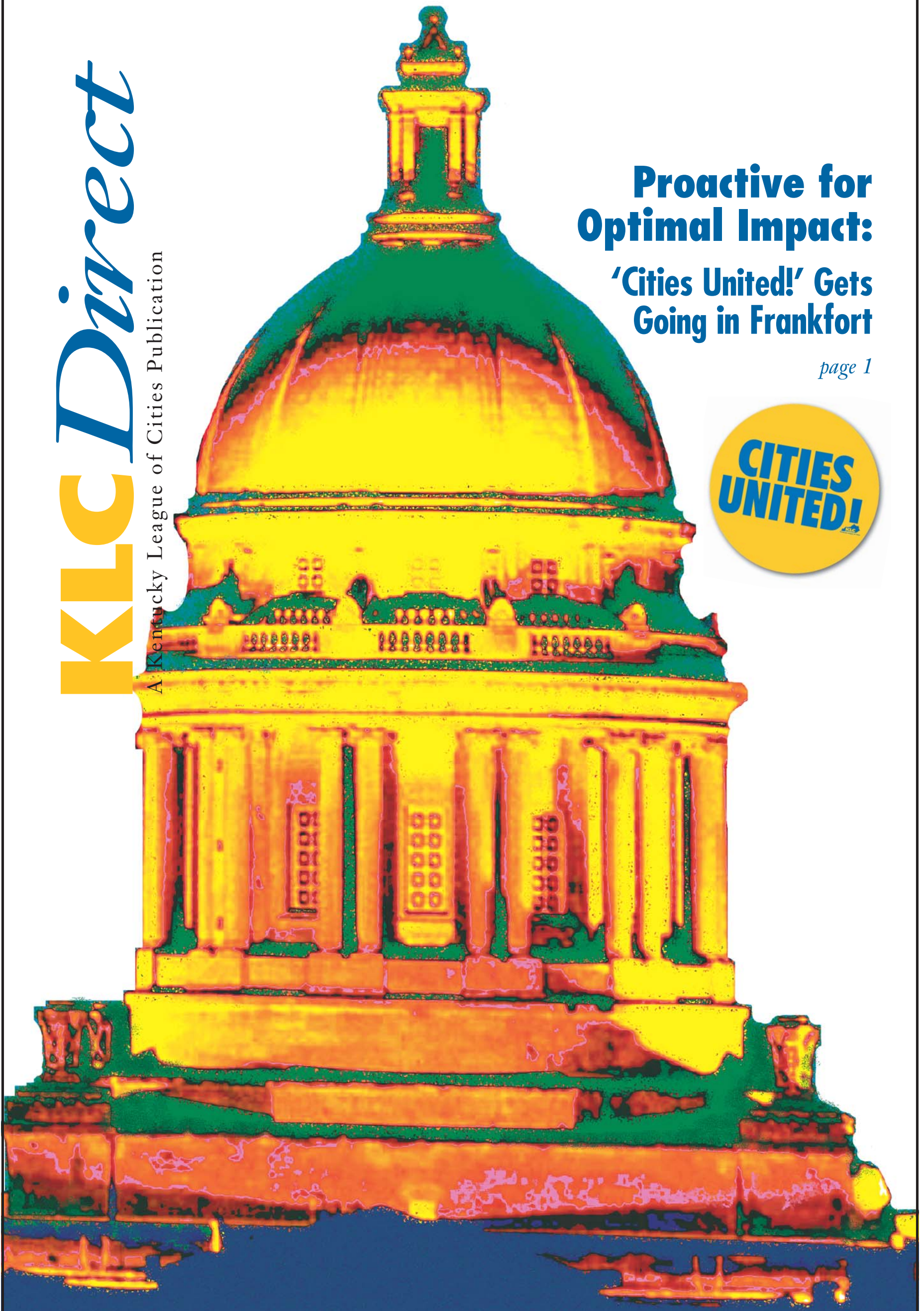


# KLCC Direct

A Kentucky League of Cities Publication

## Proactive for Optimal Impact: 'Cities United!' Gets Going in Frankfort

page 1



### IN THIS ISSUE

*Legislative Flash*

2

*The Last Word First*

3

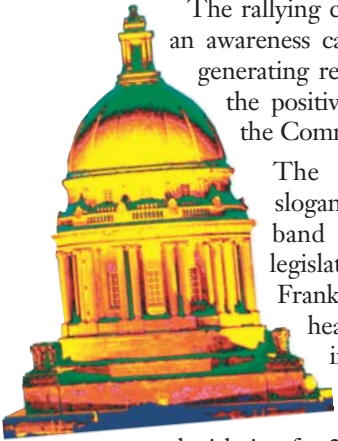
*NLC News*

6

**FRONT PAGE NEWS**

**Proactive for Optimal Impact: 'Cities United!' Gets Going in Frankfort**

As a new legislative session nears, the Kentucky League of Cities is ready to launch a proactive strategy for positive change. But to achieve maximum results, it requires YOU.



The rallying cry is "Cities United!," an awareness campaign that already is generating recognition for cities and the positive impact they have on the Commonwealth.

The strategy behind the slogan: We're asking cities to band together by calling legislators and showing up in Frankfort to make your voices heard. That's particularly important because KLC is proposing three critical pieces of legislation for 2004.

The key proposal is the **Community Investment Act**, which would allow local decision-making on whether or not to generate millions of dollars to benefit tourism and other quality-of-life projects through a virtually "painless" restaurant surcharge.

"Cities United!" is a way to give Kentucky's cities a more focused and stronger voice. It's important that legislators understand how vital cities are to every aspect of Kentucky's success. Cities, after all, drive our state's economy and are the centers of culture, education and business. They're where most Kentuckians learn, work, play, shop and reside. Just how important are cities? Consider that:

- ♦ **Eighty-three percent of all jobs in Kentucky are in our cities.**
- ♦ **Cities are responsible for 4 out of every 5 dollars of the state's economy.**
- ♦ **Cities make up only 3 percent of the land area in Kentucky but represent 54 percent of assessed real estate value.**

As you well know, cities often face an uphill struggle in getting needed support in spite of their significance. Cities are the most efficiently run form of government. To use a sports analogy, cities are the smallest team that does the most with the least.

City leaders answer directly to their constituents every day in person - at the post office, at the bank, at the grocery. But, as cities prosper and provide taxpayers with increased services, funds are often still inadequate.

Federal and state mandates are creating a fiscal crisis that must be solved. Demands include homeland security, infrastructure needs and other "cost of business expenses" such as employee benefits. Most damaging is Kentucky's crippling tax structure, which lacks equity and vision.

That's why it's so important now to push a strong "Cities United!" campaign. We need teamwork in getting out the message that home rule gives cities the means to develop adequate and sustainable revenue sources.

By making our message clear and consistent, with a united voice, we improve the chances to get the kind of help our legislators in Frankfort can provide.

Because you care about cities and the people who live in them, you are a key member of the Cities United team. It's time to suit up and go on offense. The game is in Frankfort. See you there.

**FRONT PAGE NEWS**

Proactive for Optimal Impact: 'Cities United!' **1**

**LEGISLATIVE FLASH**

Key Issues That Need Your Support **2**

**THE LAST WORD FIRST**

Want Something Better? It Starts With You! **3**

**MEMBERSHIP NEWS**

KLC - A Prime Source for Information **4**

**LAW ABIDING**

Red Flags in Local Government Ethics Law **5**

**NLC NEWS**

A Strong Partnership for Kentucky Cities **6**

**CITY POSTCARD**

A Look at the City of Crestwood **7**

**BIG IDEAS/INNOVATIONS**

FreshRate™ Opens Doors to Home Ownership **8**

**FROM THE FIELD**

Citizen Police Academy **9**



To strengthen our presence in Frankfort, KLC has adopted 'Cities United!' as a call to action for city leaders, city employees, legislators and citizens who care about the future of cities in Kentucky.

Wear 'Cities United!' buttons or stickers while at work, in your community and while in Frankfort.

Get 'Cities United!' buttons or stickers for you and your staff by calling KLC at 1-800-876-4552, or by accessing the website at [www.klc.org](http://www.klc.org).

**LEGISLATIVE FLASH**

**Key Issues That Need Your Support**

**Law Enforcement Fee**



**The situation:**

Cities are in dire need of a new source of revenue to support local police, who enforce state laws but receive inadequate compensation from the state. Local governments deserve to be reimbursed for their costs in supporting the state court system.



**Our position:**

Enact the Law Enforcement Fee, a \$20 charge on all arrests and citations resulting in convictions.

**Here is why:**

**It compensates local police for enforcing state laws.** Local police make 78 percent of the arrests for serious crimes. The resulting in court appearances reduce the time police spend on patrol, and raise overtime costs that this fee can help offset.

**It shifts the cost to law violators and saves the state money.** Law-abiding citizens aren't left footing the bill.

**It provides fair and equitable statewide fund distribution.**



**Community Investment Act**

**The situation:**

Cities throughout Kentucky face difficult budget situations and need more options to help them pay for community development.



**Our position:**

When seeking to fund popular tourism and recreation projects, Kentucky's larger cities should have the same option as fourth and fifth class cities of gaining revenue from restaurant sales.

**Here is why:**

**It empowers local decision-making.** It allows cities to use, at most, 75 percent of the revenue for recreation, tourism and other hospitality-focused projects and operations while directing at least 25 percent toward funding of the local city or joint tourism commission.

**It supports the local restaurant and tourism industries.**

**It is simple, fair, and efficient.**

**Smoke Free Zones**



**The situation:**

Proposed legislation would make it illegal for any Kentucky city to enact local smoke-free zones. But local governments are in a better position to know the wants and needs of their communities. They should retain the ability to regulate health and safety as they see fit.



**Our position:**

Instead of state control, let each Kentucky community decide for itself whether or not to establish smoke-free public areas.

**Here is why:**

**Smoking policy should not be dictated by the state.** A "one size fits all" approach overlooks the diverse needs of Kentucky's many communities.

**It gives the system an opportunity to work.** Let local citizens decide what policy works best for them.

**Local officials are closest to the people.**

**Contact your legislators at 1-800-372-7181 and ask them to vote accordingly. For further information or more details visit [www.klc.org/legislative/news.asp](http://www.klc.org/legislative/news.asp).**

## THE LAST WORD FIRST

### Want Something Better? It Starts With You!



We hold a firm belief in this country that no matter what we do, the trains will continue to arrive on time. But will they?

That symbol of government providing vital services that we've come to take for granted is in danger of jumping the tracks. Worse, as cities face dwindling revenues and fiscal crises, hasty and desperate measures to avoid a train wreck are obscuring the real issue.

As pressure mounts to cut, cut, and cut funding some more, few seem willing to focus on the key issue: what the basic role of government should be and how we should pay for it, willingly.

Everybody wants their particular services retained. Yet everybody demands it be done without paying the money required. When this sort of magical thinking rubs up against reality, the results can be depressing.

Ask city finance officers to paint a fiscal picture and the nationwide landscape is bleak. Seventy-nine percent believe that their city is less able to meet financial needs in 2003 compared to last year. Consider what happened this past summer in Kentucky, where Georgetown and Cynthiana closed their public outdoor pools, eliminating a long-cherished staple of summer fun.

More disturbing is that as the malaise grows, so does the apathy. We turned out in shamefully low numbers for the primary elections. We enjoy the greatest standard of living in the world. And we expect no change in this comfy situation, although we seem to care little about the neighbors across the way.

I look at my father and his friends, all in their 80s now, and I see them voting faithfully at every election. Many of them were raised poor, without any services. They endured the Depression and served in World War II, which, unlike the video-game TV battles of today, had a daily impact on everyone. Do my father and his peers know something we don't - or something we have forgotten?

Lest we paint too bleak a picture, it's important to remember that there is something to the idea that with crisis comes opportunity. Our current economic woes can help us restore some fundamental responsibilities we have as citizens, paying taxes is just one of them.

What order can we shape from the current chaos? We can make government our own once again. We can restore its image (and function) as the arm of the people, not their adversary.

The first step is to acknowledge the necessity of government. The next is to stop being just taxpayers and become "new citizens," involved and aware, concerned for everyone in the community.

If we refocus on the importance of local connection and commitment, we'll gain far more than keeping the trains running on time. We'll gain a foothold on the future.

Sincerely,

Sylvia L. Lovely  
KLC Executive Director and CEO

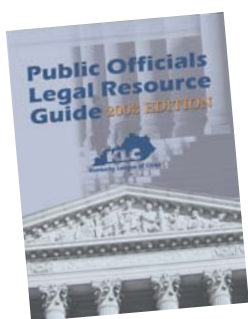
## MEMBERSHIP NEWS

### KLC - A Prime Source for Information

**2003 Kentucky League of Cities Primer** (color paper copy), \$22.50 (also available at no cost in PDF format online at [www.klc.org/research/publications.asp](http://www.klc.org/research/publications.asp)).

A valuable compilation of information collected by a variety of state agencies (including the Department for Local Government, Department of Insurance, Revenue Cabinet, and the Office of the Kentucky Secretary of State), the U.S. Census Bureau, Kentucky Association of Counties and the Kentucky State Data Center.

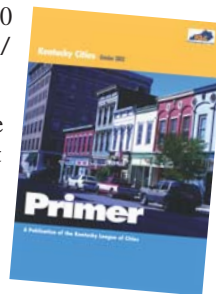
The information will serve as an underpinning for discussions for leaders, business people, students and media on the future of city government in Kentucky, as the state's local governments deal with challenges brought about by modernization, globalization, technological advances and changing demands of the citizenry and also includes population and economic statistics.



**2003 Public Officials Legal Resource Guide**, \$35 for member cities and \$75 for nonmembers.

The 2003 edition of the Public Officials Legal Resource Guide has been expanded to 21 chapters and 312 pages. This guide offers essential government information for local officials and familiarizes them with the responsibilities they face in their cities. It provides guidance on planning and conducting meetings, budgeting, taxes, municipal finance and investment, ethics and more. The Public Officials Legal Resource Guide represents the crucial training and education needed to help understand the role of an elected official.

To order contact Jeri McCullough at 859-977-3780/1-800-876-4552 or email [jmccullough@klc.org](mailto:jmccullough@klc.org).



## KLC Direct

### OFFICERS

Karen L. Cunningham  
Mayor of Madisonville  
President

David W. Cartmell  
Mayor of Maysville  
First Vice President

Bradley H. Collins  
Mayor of Morehead  
Second Vice President

Bill Nighbert  
Mayor of Williamsburg  
Immediate Past President

### EXECUTIVE BOARD

Jerry Abramson  
Mayor of Louisville Metro

Charles Beach, III  
Mayor of Beattyville

Glenn V. Caldwell  
Mayor of Williamstown

Robert A. Coleman  
Commissioner of Paducah

David Fowler  
City Attorney of Owensboro

Thomas Guidugli  
Mayor of Newport

Curtis Hardwick  
Mayor of Columbia

Teresa Ann Isaac  
Mayor of Lexington

Gregory T. Jarvis  
City Manager of Covington

Sandy Jones  
Mayor of Bowling Green

David L. Wilmoth  
Mayor of Elizabethtown

Sylvia L. Lovely  
Executive Director/CEO, KLC

The voice of Kentucky cities

**KLC Direct** is published monthly by the Kentucky League of Cities (KLC). KLC is a voluntary association of nearly 400 cities and provides a multitude of services to assist in improving local government. Please address any correspondence to KLC Direct, Kentucky League of Cities, 101 East Vine Street, Suite 600, Lexington, Kentucky 40507. Phone (859) 977-3700 or 1-800-876-4552. Fax (859) 977-3703. [www.klc.org](http://www.klc.org).

### EDITORIAL STAFF

Publisher, Sylvia L. Lovely  
Editor, Terri Johnson

Design/Layout, Ulysses C. Hayes  
Senior Writer, John McGill

Director of Communications, Bobbie Bryant

For a full list of KLC staff  
visit [www.klc.org](http://www.klc.org).

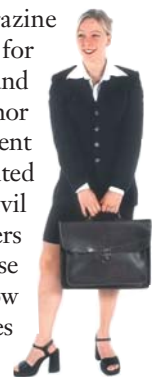
By providing pertinent information, the Kentucky League of Cities does not necessarily endorse the views, services, programs or initiatives described in the listed references or websites, nor is the Kentucky League of Cities responsible for any statements or material contained therein. This publication provides information and links as a service to readers for their consideration.

© 2003 Kentucky League of Cities

## Nominate a Woman Who Changes Lives!

*Good Housekeeping* Magazine Recognizes Women in Politics with \$25,000 Award!

Each year, *Good Housekeeping* magazine and the Center for American Women and Politics (CAWP) honor women in government - elected or appointed officials, career civil servants, or members of the military - whose work exemplifies how government improves people's lives.



The top winner receives \$25,000 and six other winners receive \$2,500.

Entry forms can be obtained online at: [www.cawp.rutgers.edu](http://www.cawp.rutgers.edu) or [www.goodhousekeeping.com](http://www.goodhousekeeping.com).

## LAW ABIDING

### Red Flags in Local Government Ethics Law



It's an unavoidable fact of life: If you are a city official, you will frequently face questions regarding ethical and unethical conduct.

The question can surface in any number of ways, such as an official wanting a contract with a city, or the hiring of a relative, or wondering if one should abstain from voting on a particular issue. It is essential that you are familiar with the ethics requirements imposed by statute or by your local ethics ordinance.

Other common ethical issues include conflicts of interest, acceptance of gifts, use of public agency equipment, and nepotism. Here's a brief discussion of each:

**Conflicts of Interest** - KRS 61.252 prohibits any city officer or employee from being interested, directly or through others, in any contract with the city unless the contract was bid or the city's legislative body makes a finding that the contract is in the best interest of the city. In addition to contracts, ethics codes generally contain provisions that prohibit other actions that might further personal interest, financial or otherwise.

**Gifts** - Most ethics codes prohibit officers and employees from accepting gifts and favors. Some codes prohibit gifts above a

specific value, such as \$50 or \$100, based on the idea that a smaller gift is not likely to sway or corrupt an official or employee. Other codes, however, prohibit gifts of any value on the theory that such a prohibition is easier to administer and creates a better appearance.

**Use of City Equipment and Personnel** - It's a standard ethics code provision to prohibit the use of public personnel, equipment or other property for personal use.

**Nepotism** - KRS 65.003 requires cities to establish a policy on nepotism, which is defined as "favoritism shown to a relative." However, the ethics law does not establish any guidelines or minimum standards. Each city is free to set its own policy as long as the subject is addressed in some manner.

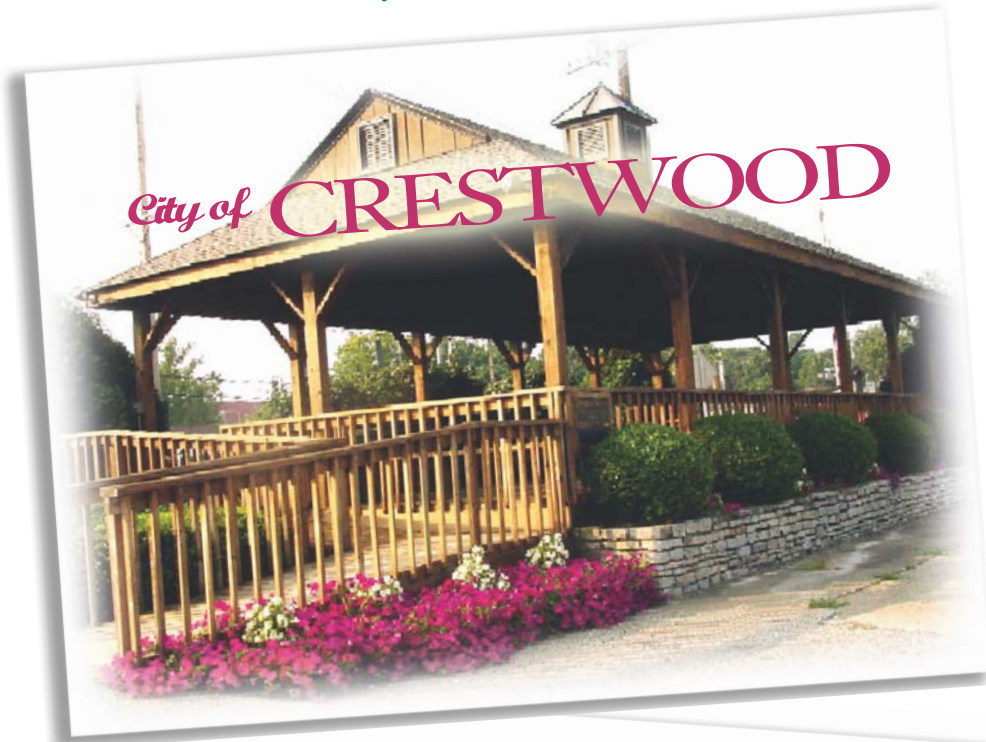
**Enforcement** - KRS 65.003 requires each ethics code to designate a person or group responsible for enforcement of the city's ethics code, including imposition of penalties enumerated in the code. The statute does not require any particular penalty to be imposed. The fines and penalties may be criminal or civil, or both.

Ethics is the cornerstone of good government. As a city official or employee, it is vital that you be aware of ethical dilemmas and consult your city's ethics code.

*For more information on specific legal issues, contact KLC Attorney JD Chaney at 1-800-876-4552, ext. 3719 or jchaney@klc.org.*

## CITY POSTCARD

### A Look at the City of Crestwood



**Mayor:** Dennis L. Deibel

**Population:** 1,999

**Location:** Oldham County, in north central Kentucky. Crestwood lies 20 miles east of Louisville.

It's all about relationship building for the city of Crestwood. The merchants within the business district of the city have worked hand in hand with city officials to vision and plan for the future. Recently, Crestwood has purchased approximately two acres in

the middle of town to be used in the future as a park and to construct a city hall/community building.

Estimated population projections for Oldham County over the next twenty years indicate that the community will double in size. In the latest census data, Crestwood alone gained population by 40 percent over the last ten years. With this anticipated growth pattern, countywide visioning and planning efforts have provided the necessary information to chart the path for new and expanded facilities.

## NLC NEWS

### A Strong Partnership for Kentucky Cities

Dear KLC Members,

I want to encourage you to join the National League of Cities (NLC) and to experience what Hazard, Henderson, Lexington-Fayette, Lyndon, Williamstown, and other Kentucky cities and towns already know--that NLC works hard for municipalities of all sizes, and the benefits are invaluable.



NLC is the oldest and largest national organization representing municipalities. For decades NLC has been working in partnership with the Kentucky League of Cities and other state leagues to strengthen and promote cities as centers of opportunity, leadership, and governance.

At the state level, KLC is a strong and effective advocate for Kentucky cities and towns because the membership always has been actively involved. At the federal level, NLC is a strong and effective advocate for Kentucky municipalities in partnership with KLC. The more cities there are in that partnership, the stronger and more effective our efforts. That's why we need you.

The benefits of NLC membership for you and for your city are considerable. For example, NLC:

- lobbies Congress and the administration to protect essential local programs
- provides breaking news on key city issues through the weekly newspaper, *Nation's Cities Weekly*
- sends action alerts about legislative issues that will help you craft grassroots lobbying messages
- recognizes your ideas and innovations through special awards programs
- provides access to NLC staff experts and a powerful network of municipal officials
- offers a members-only online database service, CityNet, with over 10,000 examples of programs

And that's just for starters! Give us a call and we'll gladly tell you more or answer your questions about NLC membership. Contact Camille Kellogg at 202.626.3153 (email: kellogg@nlc.org) or Lorraine Gloster at 202.626.3190 (email: gloster@nlc.org).

We look forward to welcoming your city.



Sincerely,

Donald J. Borut  
Executive Director, NLC

### You're Invited: NLC Expo

**Who:** City Officials

**What:** Attend the National League of Cities (NLC), 80th Congress of Cities and Exposition, *America's Cities On Stage: From the Front Porch to the Front Line*

**When:** December 9-13, 2003

**Where:** Nashville, Tennessee - Gaylord Opryland Resort and Convention Center

**Why:** It's close to home and a valuable opportunity to exchange ideas with city officials from across the country.

Sessions include: *Mobilizing Citizens; Balancing Your Political, Professional and Personal Life; Leadership in a Diverse Community* and much more. All NLC educational sessions can be counted toward outside credit hours in the KLC Public Officials Essentials Skills Institute (POESI). For a full listing of conference events and workshop descriptions, visit the NLC website at [www.nlc.org](http://www.nlc.org). Delegates registering on-line will also receive a special discount registration fee, as well as first opportunity to book a room in the President's Hotel, Gaylord Opryland Resort.

## BIG IDEAS/INNOVATIONS

### FreshRate™ Opens Doors to Home Ownership



Since the launch of FreshRate™ with three news conferences in Newport, Lexington and Louisville on September 20 and 30, lenders and KLC have received hundreds of inquiries. The initiative fills a unique niche in the home buying market by allowing moderate-income individuals and families who are qualified for a home loan, but are unable to afford the down payment, to achieve the American dream of homeownership.



"Great opportunities do three things: connect people to one another, to pride in place and spirit and to job opportunities for prosperous futures," said Sylvia L. Lovely, Executive Director/CEO of KLC and president of the NewCities Foundation. "Housing is the most fundamental fulfillment of that mission and we are proud of this initiative. Through home ownership, citizens find the linkage to basic well being and community life."

FreshRate™ is a national program that has been successfully implemented in eleven other states, typically in urban areas. Through mortgage lender Old National Mortgage, the FreshRate™ initiative will be made available to mortgage brokers across

Kentucky. Current lender partners include Fifth Third Bank, Republic Bank and Trust Company, Broadview Mortgage, Kentucky Fidelity Mortgage Company, nBank and Carteret Mortgage Corporation. Fannie Mae has agreed to purchase \$30 million in taxable bonds issued by KLC through Stephens Inc. to fund the FreshRate™ initiative.

The FreshRate™ initiative draws several distinctions in the mortgage marketplace, including:

- ♦ Serving families and individuals within the moderate-income range, up to 125 percent of median, about 10 percent above other lending programs in many areas;
- ♦ Not restricted to first-time homebuyers;
- ♦ Can be used for any type of primary residence - single family home, condominium or townhouse;
- ♦ Local lenders originate the loans, which are 30-year FHA, Veterans Administration (VA) or Rural Housing Services (RHS) loans; and
- ♦ Down-payment assistance can be completely forgiven after 10 years and the loans are assumable should a home owner need to leave the residence within the 10 year timeframe.

For more information on the FreshRate™ initiative and KLC, contact Anthony Wright, Community Development Advisor at 1-800-876-4552 or [awright@klc.org](mailto:awright@klc.org).

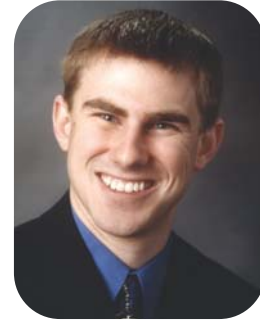
For more information on obtaining a FreshRate™ loan and a list of the most current local participating lenders, visit [www.freshrate.com](http://www.freshrate.com) or [www.klc.org](http://www.klc.org).

## MEET ME AT KLC

### Staff Profile

**Ryan Adkins**

Insurance Systems Administrator  
Joined KLC January 2003



Ryan Adkins joined the KLC Information Technology team in January as Insurance Systems Administrator. He manages all insurance data for the Kentucky League of Cities Insurance Services (KLCIS) including systems that efficiently track customer claims and generate underwriting policies respectively. Major projects for Ryan include the Riskmaster workers' compensation conversion and assisting with the insurance paperless project.

Ryan graduated from Wake Forest University in 2001. While there, he was the Demon Deacons' team mascot, during which time the team won the NIT Tournament! Before coming to KLC, Ryan worked as a computer systems implementation specialist for Andersen Business Consultants in Charlotte, North Carolina.

A native of Lexington, Ryan is a member of Lexington Young Professionals Association (LYPA) and plays in local soccer leagues. Ryan enjoys golf, basketball and football, as well as anything that has to do with the outdoors.

Dedicated is a good word to describe Ryan's approach to things. He did not miss a day of classes from kindergarten to his Junior year in college!

Contact Ryan at 1-800-876-4552, ext. 3769 or [radkins@klc.org](mailto:radkins@klc.org).

## STAFF NOTES

Congratulations to Attorney **J. D. Chaney** who graduated from the University of Kentucky College of Law in May, passed the Kentucky Bar in October and has been named Counsel for Member Legal Services at KLC.

## KLC FACTOID

### Why are there lines on a sidewalk?

It's basically a way for builders to cover up cracks, concrete cracks, of course. When concrete dries, it shrinks and breaks apart. Making small divisions between slabs gives the concrete a more natural, thin place to crack, and makes it less noticeable. When damaged, it's also much easier to replace a single slab when it is already divided.

Source: *Mental Floss*, Vol. 2, issue 4

## FROM THE FIELD

### Berea and Richmond Collaborate on Citizen Police Academy



Berea Councilperson Virgil Burnside, Richmond Mayor Connie Lawson and KLC Senior Marketing & Communications Manager Terri Johnson are among 28 Madison County citizens selected as members of the Greater Madison Citizen Police Academy charter class.

The 12 week program is a unique collaboration between the Richmond Police Department, the Berea Police Department and the Department of Criminal Justice and Training and includes immersion in police driving and interaction skills, crime scene investigations,

interrogation techniques, dealing with the media and public, firearms and S.W.A.T. training, as well as overviews on issues such as domestic violence and drug trafficking.

The Academy is one of the most interactive and comprehensive programs of its type in the country and has already been used as a model for other cities. Berea Police Chief Dwayne Brumley, Richmond Assistant Police Chief Samuel Manley and Richmond Officer Willard Reardon have been instrumental in developing the curriculum.

## SHOW ME THE MONEY

### 11 Cities Get Local Records Grants

Eleven cities, Bellevue, Bloomfield, Hartford, Independence, Lawrenceburg, Meadow Vale, New Haven, Newport, Oak Grove, Springfield and Stanford have received Local Records grants from the The Department of Libraries and Archives, an agency of the Education, Arts & Humanities Cabinet. The grants will provide funds for

purchases and upgrades of microfilming valuable records, restoration and installation of automated indexing systems. To obtain an application or additional information on grants visit the department's website at [www.kdla.net](http://www.kdla.net) or contact Jerry Carlton at (502) 564-8300, ext. 255.

## CALENDAR OF EVENTS

### Educate, Celebrate, Participate

#### DECEMBER

- 5** **Summit on Erasing Racism**  
Mariott Griffin Gate  
Lexington, Kentucky
- 9** **Trenching Safety**  
Madisonville Technology Economic Center (MTEC)  
Madisonville, Kentucky
- 9-13** **National League of Cities: Congress of Cities**  
Nashville, Tennessee

#### FEBRUARY 2004

- Feb 19** **KLC City Night!**  
Holiday Inn Capital Plaza  
Frankfort, Kentucky



For more information or to register online, visit KLC's website at [www.klc.org/leadership](http://www.klc.org/leadership).  
With questions, contact Doreen Caines at 1-800-876-4552, or [dcaines@klc.org](mailto:dcaines@klc.org).

### MARK THIS DATE!

**December 5, 2003**

#### Leadership Summit on Erasing Racism

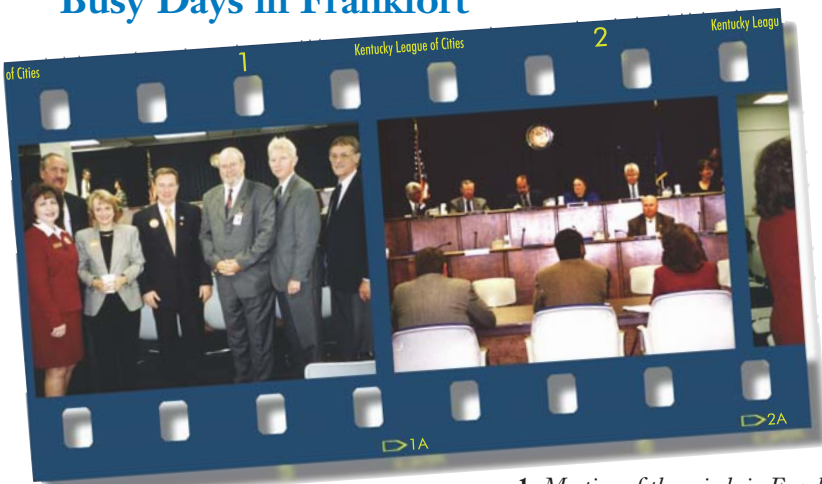
The Kentucky League of Cities, NewCities Foundation and the National Conference for Community and Justice are pleased to announce Phase II of Lexington's Leadership Summit on Erasing Racism to be held on Friday, December 5, 2003 at the Mariott Griffin Gate, Lexington, Kentucky, from 9 a.m. - 12 p.m. Professor Roger Wilkins from George Mason University will be the keynote speaker.

## We Want to Hear from You!

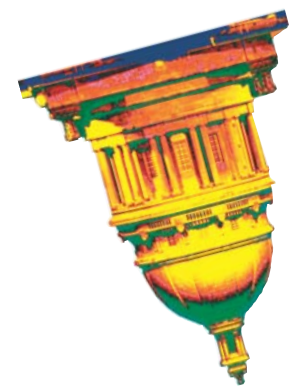
To submit a story or commentary for KLC DIRECT departments, please contact the KLC staff listed or go to [www.klc.org](http://www.klc.org). For overall feedback, contact Terri Johnson at 1-800-876-4552, ext. 3784, or [tjohnson@klc.org](mailto:tjohnson@klc.org).

## LEGISLATIVE FLASH

### Busy Days in Frankfort



**1.** Meeting of the minds in Frankfort: (left to right) Madisonville Mayor Karen L. Cunningham, KLC President; Jack Couch, Executive Director, Kentucky Council of ADD's; Sylvia L. Lovely, KLC Executive Director/CEO; Newport Mayor Tom Guidugli, KLC Board Member; Jack Scrivner, Executive Director, KIPDA; Wendell Lawrence, Executive Director, Lincoln Trail ADD; and John Mays, Executive Director, Northern Kentucky ADD. **2.** Bert May, KLC Legislative Liaison, Jerry Deaton, KLC Director of Intergovernmental Affairs and Mayor Karen L. Cunningham, KLC President, testify before the Interim Joint Committee on Local Government in late October 2003. **3.** Madisonville Mayor Karen L. Cunningham discusses city issues with Danville Commissioner James Gay and Danville Acting City Manager Bridgette Milby. **4.** A view of the capital rotunda on a crisp autumn day.



Kentucky League of Cities  
**KLC**

**KLC Direct**  
A Kentucky League of Cities Publication

KLC Direct is a monthly publication of the Kentucky League of Cities.  
Any comments or article suggestions should be forwarded to:  
Kentucky League of Cities, 101 East Vine Street, Suite 600, Lexington, KY 40507-3700  
859-977-3700 • 1-800-876-4552 • Fax: 859-977-3703 • [www.klc.org](http://www.klc.org)

PRST STD  
U.S. POSTAGE  
**PAID**  
LOUISVILLE, KY  
PERMIT NO. 1477